



EX.AMYRA is the ATEX zones 2 & 22 LED spray and finishing booth solution for every industry: Automotive, Aerospace, Railway and General Industrial. Featuring a one-piece, all-aluminum casing with tempered glass front, EX.AMYRA is available in 5 different lengths, thus offering the perfect alternative to obsolete fluorescent light fixtures.

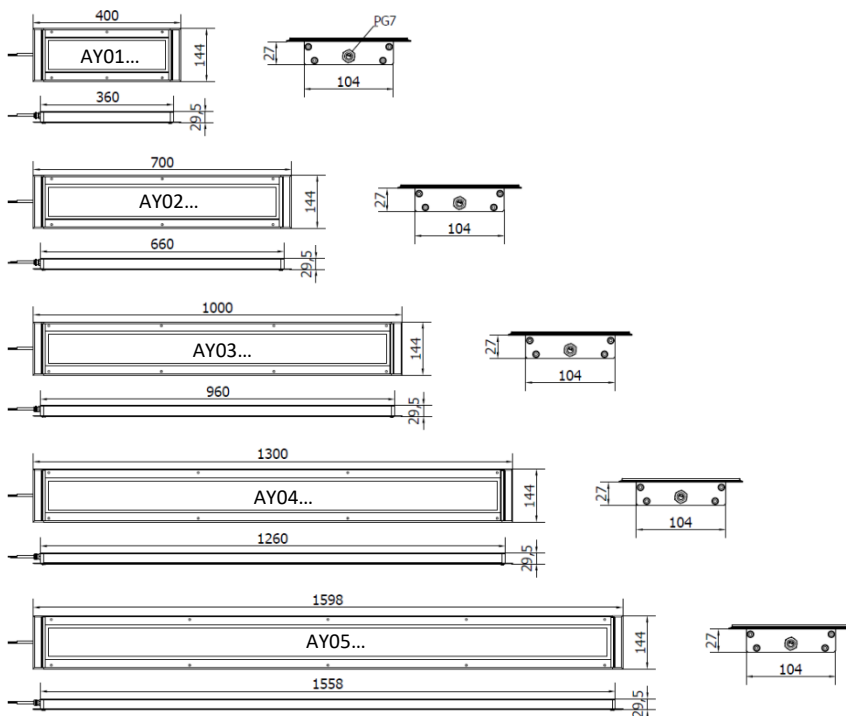
The CCEA Integrated Driver System (IDS) electronics, combined with the premium LED diodes, the high Color Rendering Index and the dedicated optics allow energy savings up to 45%, the elimination of shadow cones and a homogeneous light output, constant over time.

This innovative LED solution allows operation with high accuracy, thanks to an exceptional brightness, providing at the same time a more comfortable environment. The ultra-slim design (only 27 mm) makes EX.AMYRA quick and easy to install, even on thin panels.

- ATEX Zones 2 & 22
- 5 lengths from 400 mm to 1600 mm
- Power usage 20 W, 40 W, 60 W, 80 W and 100 W
- 24 Vdc Power supply via 1,5 m cable
- Flush mounted - Installation in 4 minutes
- Light color temperature 6500 K – CRI80
- 120° Light beam with Integrated prismatic diffuser
- LED lifespan (L 70) > 60,000 hours



DIMENSIONS (mm)



MECHANICAL FEATURES

Model	AY0131S01	AY0231S01	AY0331S01	AY0431S01	AY0531S01
Casing Material	Extruded aluminum				
Side Enclosers	Extruded aluminum				
Surface Treatment	Standard: 10 microns of natural aluminum solution oxidation				
Front Glass	Extra clear transparent tempered 4 mm thick glass				
Weight	~ 2,0 kg	~ 3,0 kg	~ 4,0 kg	~ 5,1 kg	~ 6,2 kg
Protection Index	IP68 – IP69				
Impact Resistance	in accordance with EN60079-0:2012				
Operating Temperature	-20 °C to + 45 °C				
Installation	N° 6 M5 screws	N° 6 M5 screws	N° 8 M5 screws	N° 8 M5 screws	N° 10 M5 screws

ELECTRICAL FEATURES

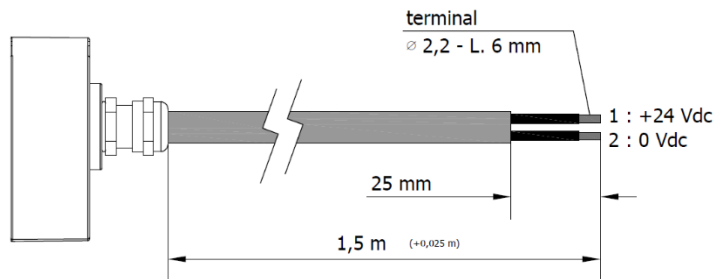
Model	AY0131S01	AY0231S01	AY0331S01	AY0431S01	AY0531S01
Power Input	20 W	40 W	60 W	80 W	100 W
Power Supply	22 ÷ 36 Vdc				
Current	0,85 A @ 24 Vdc	1,65 A @ 24 Vdc	2,5 A @ 24 Vdc	3,3 A @ 24 Vdc	4,15 A @ 24 Vdc
Device Power Protection	Full protection against reverse polarity				
Electrical Connection	Cable 1,5 m				
Insulation Class	Class III (SELV)				
Efficiency Class	A/A+/A++/A+++ (Integrated LED module) compliant with UE Law No. 874/2012				

CONNECTION with 1,5 m Cable, Standard length

PVC 2x 0,75 mm² L = 1,5 m

Wire

Connection



1 Black

+24 Vdc

2 Black

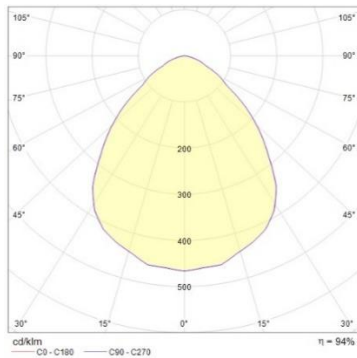
0

OPTICAL FEATURES

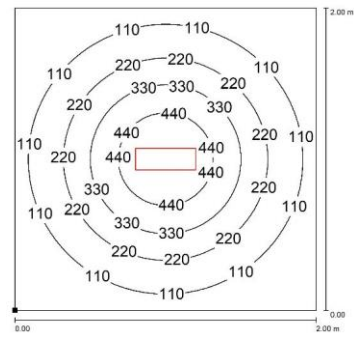
Model	N° and Type of LEDs	LED Lifespan	Light Color	CRI	Light Beam Angle	Luminous Flux	Efficiency
AY0131S01	60 Mid Power LED	60.000 L70**	6500 K	80	120 °	1750 lm	88 lm/W
AY0231S01	120 Mid Power LED	60.000 L70**	6500 K	80	120 °	3500 lm	88 lm/W
AY0331S01	180 Mid Power LED	60.000 L70**	6500 K	80	120 °	5300 lm	89 lm/W
AY0431S01	240 Mid Power LED	60.000 L70**	6500 K	80	120 °	7100 lm	89 lm/W
AY0531S01	300 Mid Power LED	60.000 L70**	6500 K	80	120 °	8900 lm	89 lm/W

PHOTOMETRIC DIAGRAMS

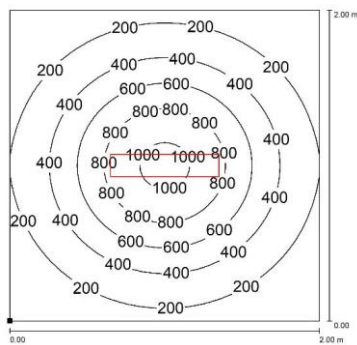
120° Flow beam



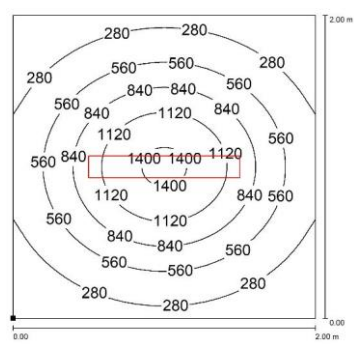
AY0131S01



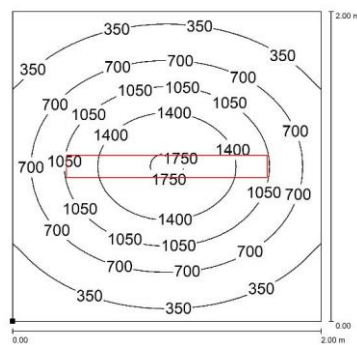
AY0231S01



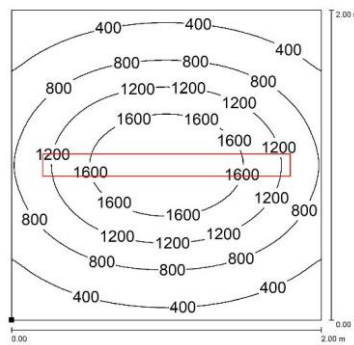
AY0331S01



AY0431S01



AY0531S01



Distance graphic: 1m

ORDER CODES

Model	Description
AY0131S01	EX AMYRA, 400 mm, 120°, 20W, 24Vdc, Cable 1,5m
AY0231S01	EX AMYRA, 700 mm, 120°, 40W, 24Vdc, Cable 1,5m
AY0331S01	EX AMYRA, 1000 mm, 120°, 60W, 24Vdc, Cable 1,5m
AY0431S01	EX AMYRA, 1300 mm, 120°, 80W, 24Vdc, Cable 1,5m
AY0531S01	EX AMYRA, 1598 mm, 120°, 100W, 24Vdc, Cable 1,5m