

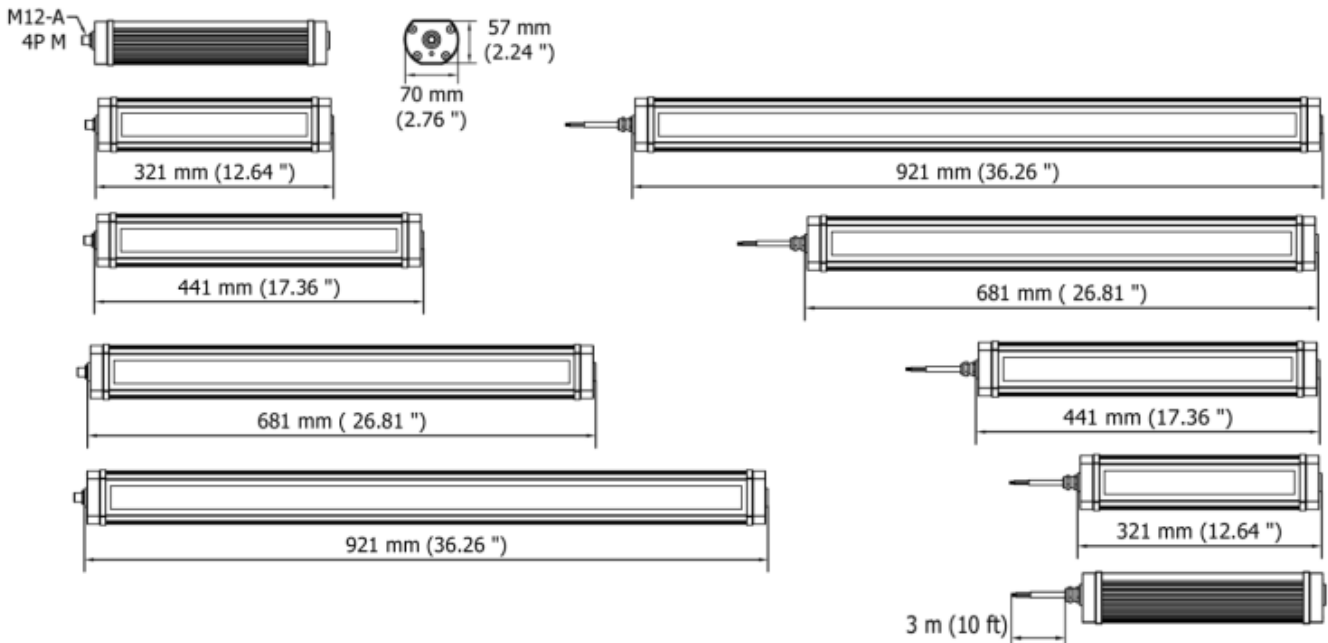
# TRACKALPHA PRO



Trackalpha Pro luminaires are the surface mount lights in 120 Vac integrated, and they are the answer as machine lights for comprehensive CNC machines, manufacturing, and automation applications. Trackalpha Pro is the optimum flexible solution for retrofitting old machines thanks to the combination of 2 3/4" diameter housing, M12 connector, and universal mounting brackets. Trackalpha Pro offers four standard lengths and multiple customized sizes preferences thanks to the engineered modular aluminum housing and optimized PCBs. The traditional 10-foot cord or M12 Connector provides a secure, fast, accessible electrical junction to 120 Vac with no additional supply unit. Two standard mounting options are available: rear clips or side mounting brackets; they allow precise adjustment of the light direction up to 90° towards the work area and provide secure clamping and flexible installation of the luminaires on redeveloping machines.

- Housing is made of aluminum alloy resistant to oil, coolants, lubricants, and dust.
- Hardened frosted glass 3/16" thick is debris resistant, coolant backing Free, provides uniform illumination
- Four Standard Lengths to meet the different applications requirement
- 120° Beam opening angle to provide comprehensive and intense illumination
- LED lifespan: 60,000 hours > (L 70)
- Light color temperature 5000 K -- CRI 80
- 120 Vac via M12 or 10ft. (3m) Cable for more flexibility
- Three mounting options for a quick and practical installation are TAFX03 side Brackets, TACLIP rear clamping, B03 magnet

## DIMENSIONS



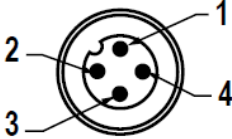
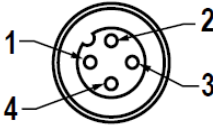
## MECHANICAL FEATURES

Model	TA0224S01	TA0224S02	TA0324S01	TA0324S02	TA0524S01	TA0524S02	TA0724S01	TA0724S02
Casing Material	Anodized aluminum							
Side Enclosers	Anodized aluminum							
Surface Treatment	Natural aluminum anodisation							
Front Glass	Extra clear tempered 0.20 in (5 mm) thick frosted glass IK06							
Weight	3.16 lb 1,43 kg	3.61 lb 1,64 kg	4.05 lb 1,84 kg	4.50 lb 2,04 kg	5.66 lb 2,57 kg	6.82 lb 2,82 kg	7.41 lb 3,36 kg	7.86 lb 3,56 kg
Protection Index	IP67 Compatible with NEMA Type 12							
Impact Resistance	1.00 N m/s		1.00 N m/s		1.00 N m/s		1.00 N m/s	
Operating Temperature	04°F (-20°C) to +113°F (+ 45°C)							
Mounting	TAFX02 Stainless-steel side brackets / TACLIP Aluminum rear Clip / Magnet B03							
Installation	Suitable for wet location and under-cabinet and surface mount							

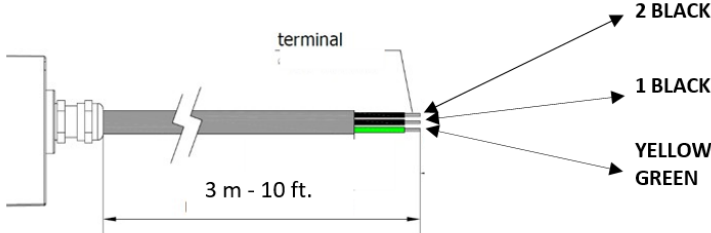
## ELECTRICAL FEATURES

Model	TA0224S01	TA0224S02	TA0324S01	TA0324S02	TA0524S01	TA0524S02	TA0724S01	TA0724S02
Power Input	13 W		19,5 W		32,5 W		45,5 W	
Power Supply	100 ÷ 120 VAC 60 Hz							
Device Power Protection	Voltage Spike							
Electrical Connection	M12-4 4P M	CABLE	M12-4 4P M	CABLE	M12-4 4P M	CABLE	M12-4 4P M	CABLE
Insulation Class	Class I							

## CONNECTION with M12-4P Male A Coding

Male	Female	Pin	Connection
		1	HOT 120 V
		2	GND
		3	NEUTRAL 0 V
		4	NOT CONNECTED

## CONNECTION with 10 ft. (3m) Cable, Standard length

PVC 3G1 mm <sup>2</sup> L= 3 m (17 AWG L. 10 ft)	Conductor	Connection
	1 Black	NEUTRAL
	2 Black	HOT
	Yellow / greens	GROUND

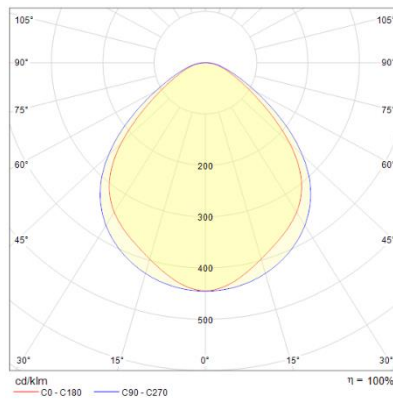
120V  
120V  
0V

# OPTICAL FEATURES

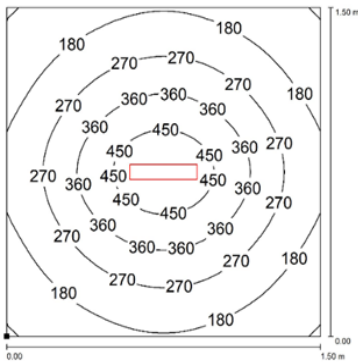
Model	N° and Type of LEDs	LED Lifespan	Light Color	CRI	Light Beam Angle	Luminous Flux	Efficiency
TA0224S01	28 Mid Power LED	60.000 L70**	5000 K	80	120°	1300 lm	100 lm/W
TA0224S02	28 Mid Power LED	60.000 L70**	5000 K	80	120°	1300 lm	100 lm/W
TA0324S01	42 Mid Power LED	60.000 L70**	5000 K	80	120°	1950 lm	100 lm/W
TA0324S02	42 Mid Power LED	60.000 L70**	5000 K	80	120°	1950 lm	100 lm/W
TA0524S01	70 Mid Power LED	60.000 L70**	5000 K	80	120°	3250 lm	100 lm/W
TA0524S02	70 Mid Power LED	60.000 L70**	5000 K	80	120°	3250 lm	100 lm/W
TA0724S01	98 Mid Power LED	60.000 L70**	5000 K	80	120°	4550 lm	100 lm/W
TA0724S02	98 Mid Power LED	60.000 L70**	5000 K	80	120°	4550 lm	100 lm/W

# PHOTOMETRIC DIAGRAMS

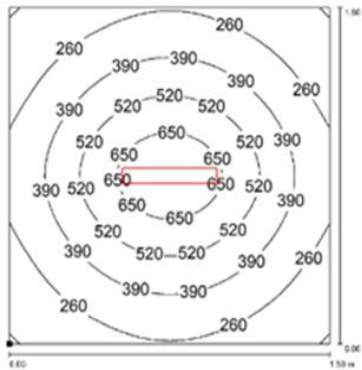
120° Flow beam



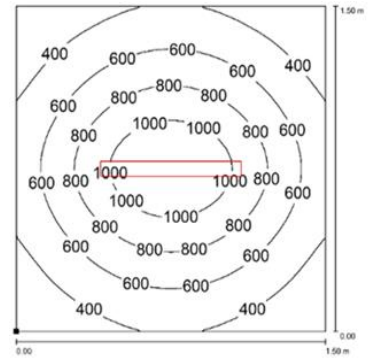
TA0224S01 / TA0224S02



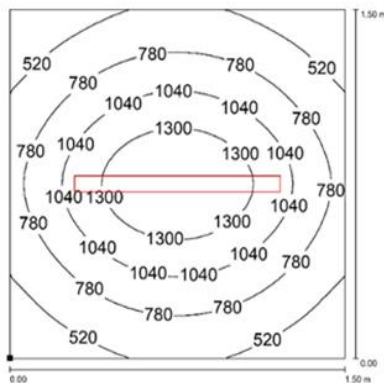
TA0324S01 / TA0324S02






TA0524S01 / TA0524S02



TA0724S01 / TA0724S02



## MOUNTING OPTIONS

Product pictures	Description	Code product
	Robust, versatile and vibration resistant, it is a 70° angle adjustment bracket. Made of stainless steel, it is the perfect solution when you need to adjust the direction of the flow beam in high-vibrating applications.	TAFX02
	Sturdy, flexible and vibration resistant, it is a 30° angle adjustment bracket. Made of anodized aluminum, it is the perfect solution when you need to retrofit an obsolete machine tools and machining centers.	TACLIP
	Strong magnetic disc made of neodymium. Use along with ALPHA.FX02 brackets when you need to move the light frequently and to different positions. Suitable to use in high-vibrating applications.	B03

## ORDER CODES

Model	Description
TA0224S01	TRACKALPHA, 12.64"(321 mm), 120°, 13W, 120Vac, M12-A 4P Male
TA0224S02	TRACKALPHA, 12.64"(321 mm), 120°, 13W, 120Vac, Cable 10ft (3mt)
TA0324S01	TRACKALPHA, 17.36"(441 mm), 120°, 19.5W, 120Vac, M12-A 4P Male
TA0324S02	TRACKALPHA, 17.36"(441 mm), 120°, 19.5W, 120Vac, Cable 10ft (3mt)
TA0524S01	TRACKALPHA, 26.81"(681 mm), 120°, 32.5W, 120Vac, M12-A 4P Male
TA0524S02	TRACKALPHA, 26.81"(681 mm), 120°, 32.5W, 120Vac, Cable 10ft (3mt)
TA0724S01	TRACKALPHA, 36.26"(921 mm), 120°, 45.5W, 120Vac, M12-A 4P Male
TA0724S02	TRACKALPHA, 36.26"(921 mm), 120°, 45.5W, 120Vac, Cable 10ft (3mt)
TAFX02	TRACKALPHA, stainless steel side brackets kit 90°
TACLIP	TRACKALPHA, rear mounting clips kit
B03	Magnet Diam 1.9" (48 mm)
M12AFCS	Pre-assembled M12 4Pin, female, A Coding, CABLE 5mt, UL

## C+R Automations- GmbH

Nürnberger Straße 45  
90513 Zirndorf

Tel. +49 (0)911 656587-0  
Fax +49 (0)911 656587-99

E-Mail: [info@crautomation.de](mailto:info@crautomation.de)  
[www.crautomation.com](http://www.crautomation.com)

Änderungen vorbehalten